

SPECIALTY SALES & SERVICE

1954 North Linn Avenue • New Hampton, Iowa 50659
 Ph: (641) 394-3141 • Fax (641) 394-3823 • www.mitkollc.com

Customer New Hampton Community School (Phone) 641-394-2144
710 West Main St New Hampton, Ia 50659

Qty	Model	Description	Cash Price
1	900782	Eiskone Heavy Duty 96" Snow Pusher Wrethone Cutting Edge Pullback option included Operating Weight 900 Pounds	4498.00
		Incoming Freight	295.00

Sub Total	4793.00
Sales Tax	
Balance Due	

Thank You

Purchaser's Signature _____ Date 10-13-2021 Dealer or Authorized Representative Mitko Supply Sales

ERSKINE[®]

ATTACHMENTS

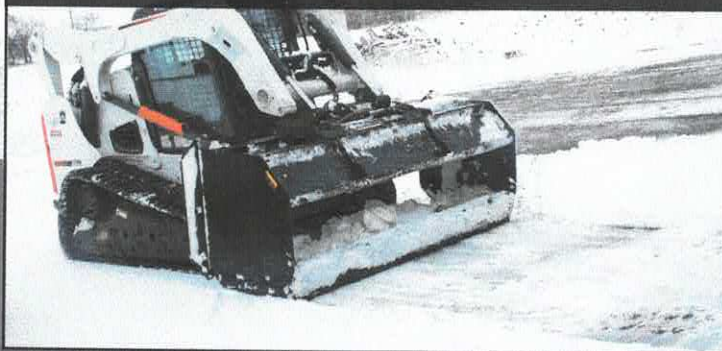
WWW.ERSKINEATTACHMENTS.COM

800.437.6912

SNOW PUSHER SKID STEER ATTACHMENT

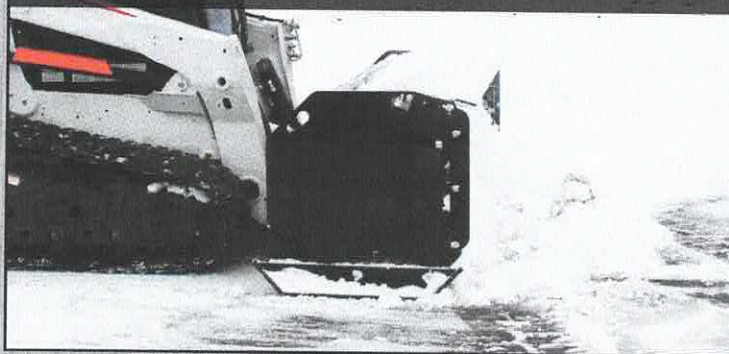


Can be used to back drag snow away from garage doors or walls

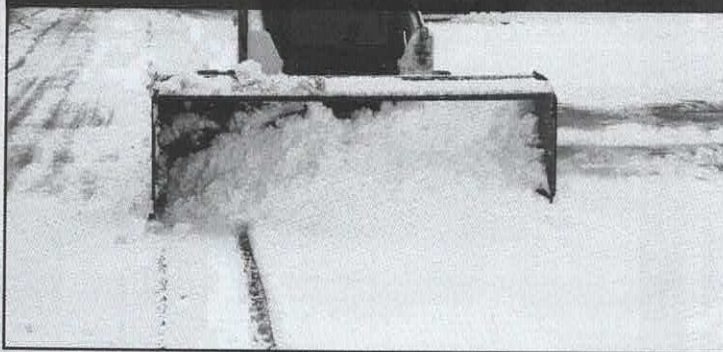


This Snow Pusher is designed to move a large volume of snow very quickly – up to five times faster than a conventional snow blade. The perfect way to remove snow from parking lots, driveways, and from up against buildings utilizing the optional “Pull Back” system.

Massive 37x37” box for greater carrying capacity



Operates both forward and backward



ERSKINE[®]

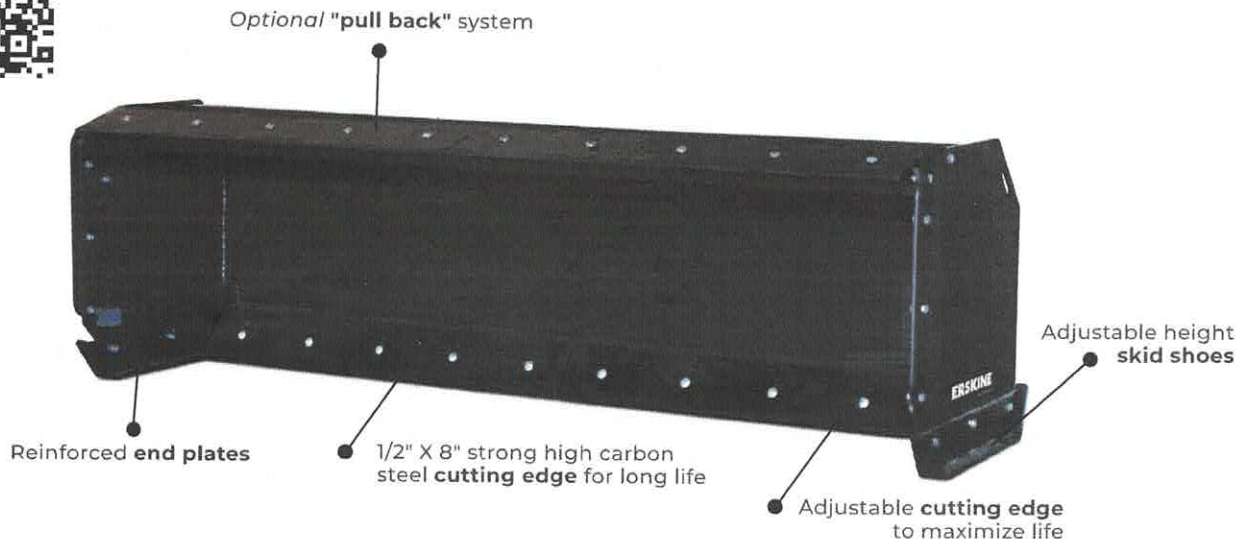
ATTACHMENTS

WWW.ERSKINEATTACHMENTS.COM

800-437-6912

Snow Pusher

Take a Picture of This QR Code With Your Smart Phone to See it in Action



FEATURES & BENEFITS

- 37" high side panels
- Strong, high-carbon steel cutting edge for long life
- Features the Quick Attach mounting system for fast, easy hook-up
- Easy adjust depth shoes
- Optional "pull back" scraper blade turns pusher into a "scraper" for more versatility
- Tubular steel frame for added strength

SPECIFICATIONS / OPTIONS

Model	96"	120"
Part Number	900782	900783
Weight	900 lb.	980 lb.
Maximum Width	37"	37"
Maximum Height	37"	37"
Maximum Length	100"	125"
High-Carbon Cutting Edge	.5" x 8" Reversible	.5" x 8" Adjustable
Moldboard Thickness	.134"	.134"
Endplate Thickness	.375"	.375"
Side Bracing Tubing	2.5" square	2.5" square
Tube Thickness	.25"	.25"
Back Bracing Tubing	3" square	3" square
Tube Thickness	.1875"	.1875"

Options

Pull Back System

Replacement Steel Cutting Edge

Urethane Cutting Edge (in lieu of steel)

Urethane Cutting Edge (replacement)

Rubber Cutting Edge (in lieu of steel)

Rubber Cutting Edge (replacement)

* For more specification details please see our website www.erskineattachments.com