

ALL YOU NEED TO KNOW ABOUT YOUR TOUR

Leaving: Friday, March 10, 2017 4:30 AM

Returning: Sunday, March 12, 2017 9:30 PM

Traveling By:

- Round-Trip transportation via Coach

Tour Director:

- Your Professional Onsite Tour Director will meet you upon arrival and stay with you until you depart.

Accommodations:

- 2 Nights
- Quad Occupancy for Students (2 beds per room)
- Double Occupancy for Chaperones (2 beds per room)
- Night security each evening at the hotel

Meals:

- Breakfasts: 2
- Dinners: 2

TOUR PRICING

# OF PAYING PASSENGERS	78	74	68
# OF COMPLIMENTARY CHAPERONES (DOUBLE OCCUPANCY)	2	2	2
STUDENT PRICE (QUAD OCCUPANCY)	\$449	\$459	\$479
PAYING ADULT PRICE (DOUBLE OCCUPANCY)	\$549	\$565	\$579

All taxes and gratuities are included where applicable.

ADDITIONAL OPTIONS AVAILABLE

Refund Guarantee Protection \$44 per person

If Refund Guarantee Protection is included for the entire group, the cost will be \$36 per person.

From the minute a passenger purchases this protection, they can cancel up to the minute of departure, for any reason and they will receive a full refund of all tour payments made, less the cost of the protection.

Room Upgrades

- Student - Triple Upgrade \$25 per person
- Student - Double Upgrade \$80 per person
- Adult - Single Upgrade \$202 per person

SEEING, LEARNING, DOING

Here's what's included:

- Visit the St. Louis Zoo
- Enjoy a tour of the fabulous Fox Theatre!
- Visit the Loop
- Visit the Missouri History Museum
- Saint Louis Art Museum
- Enjoy a performance of the St Louis Symphony Orchestra!
- Gateway Arch Museum - Self Guided Visit - Located at Old Courthouse, 11 N. 4th, St. Louis, MO
- Journey to the Top - Arch Tram Ride and Movie
- Performances by the band and choir on the Gateway Arch grounds (per availability)
- Gateway Arch Riverboat Cruise w/ Boxed Lunch

BRIGHTSPARK ADVANTAGE

- Professional Tour Director Guide
- Brightspark Drawstring Backpacks
- Travel Guard Health & Accident Insurance
- Travel Guard Trip Delay Protection
- Optional Online Registration
- Online Payments by Credit Card
- Members of SYTA, ABA, and USTOA
- \$1 Million Deposit Protection Plan
- All Taxes and Gratuities
- Trip Resource Manual
- General Liability Insurance
- Emergency Tags/Lanyards with 24 Hr. Service



Tour Sponsor: Justin Adam
New Hampton High School
710 W MAIN
NEW HAMPTON, Iowa 50659 1004

September 06, 2016

Dear Justin,

Thanks for requesting a quote for your group's tour. We're happy to offer you this proposal. While you review it, keep in mind the reasons why Brightspark does student travel better:

- We put **safety and security** above all
- Decades of experience means we do it right with **full service and support**
- We tailor your tour to fit your unique group, interests, budget and more
- We handle the details so you'll have a **worry-free experience**

This proposal is for **your review only**. You might want to change your tour inclusions during the planning process, so we'll send you final handouts to share with parents and students once your booking is complete.

We guarantee these prices until **10/6/2016**; what you're seeing is based on our recent communication, but if you have any concerns or changes you'd like to make, let us know. Feel free to call me with any questions and I'll touch base with you in a few days to continue working on your ideal tour.

Looking forward to talking with you soon,

John Aboud
Tour Consultant
Tel: 1-708-831-7156
Email: jaboud@brightsparktravel.com

Judy Chipman
Tour Specialist
Tel: 1-708-831-7147
Email: jchipman@brightsparktravel.com

THE BRIGHTSPARK DIFFERENCE

WE'RE EXPERTS IN STUDENT TRAVEL

- Our travel team has over 100 combined years of experience.
- Our staff includes former educators and experts in music and travel.
- We are members of USTOA, SYTA, & ABA.

WE MAKE IT EASY FOR YOU

- We handle participant payments.
- We'll give you a step-by-step guide to running your group trip smoothly.
- We provide 24/7 access to MyTour so you can manage accounts, rooming & bus lists and group communication online.

WE MAKE YOUR PASSENGERS HAPPY

- We have friendly payment terms.
- We accept online registration and credit cards.
- We provide a 24/7 on-tour emergency hotline.
- We can help with fundraising.
- Health and accident insurance is included on all tours.
- We provide trip delay protection.



BrightsparkSM TRAVEL

August 26, 2016

Revised 9/6/16

PROPOSED ITINERARY –

*** THE SPECIFIC QUOTED INCLUSIONS ARE NOT FINAL UNTIL ALL SITES / RESTAURANTS ARE BOOKED AND CONFIRMED. ***

IT2b

New Hampton High School Music Department from New Hampton, IA Traveling to St Louis, MO, March 10 – 12, 2017

Tour Sponsor/Moderator:

Justin Adam – Band Director

641-394-2144 (W)

j_adam@new-hampton.k12.ia.us

Tour Consultant: John Aboud

Tour Support: Judy Chipman

Tour Director: TBA Name/cell phone number

Touring Motorcoach: TBA Company Name, Dispatch #

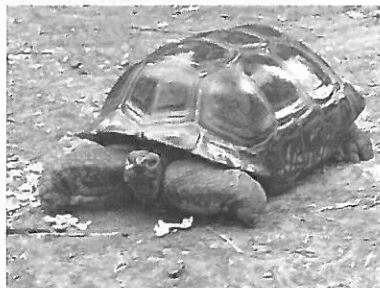
Friday, March 10 _____ (1)

MEALS INCLUDED: D

4:30 AM Charter motor coaches arrive at New Hampton High School for loading.
710 W. Main Street, New Hampton IA 50659

5:00 AM Depart New Hampton, IA, for St. Louis MO. With rest stops and 2 meals, your total estimated travel time is 7 hours. Meals en route are on your own.

12:30 PM Approximate arrival time at the St. Louis Zoo in Forest Park..
This evolving venue is one of the most visited in St Louis.



- Meet your Professional Tour Director here.

4:30 pm * Depart for Dinner



5:30 PM Dinner at **Hard Rock Café**



Your guide may show you a few sites on the way to your hotel.

8:00 PM Check into your St Louis Hotel.

Whenever swimming in a hotel pool, trip participants should be advised to follow pool rules. A lifeguard will not be present so you will be swimming at your own risk. Brightspark suggests that a chaperone be present if students are in the pool area.

PRIVATE SECURITY EACH EVENING IN YOUR HOTEL.

Saturday, March 11 _____ **(2)**
MEALS INCLUDED: B, D

8:00 AM **Breakfast** at your Hotel

9:30 AM Tour the **Fabulous Fox Theatre**

The Fox Theatre opened in 1929 as one of the crown jewels in William Fox's motion picture empire. C. Howard Crane, one of the most distinguished movie palace architects of the era, designed the Fox at a cost of six million dollars. With a seating capacity of 5060, the Fox was second in size only to New York's Roxy Theatre. It was also one of the first theatres in the country equipped for the latest rage sweeping the movie industry--the "talkie."



Fox Theatre Interior.

11:00 PM

Lunch on your own at **The Loop**

Nicknamed “The Loop” after an old streetcar turnaround, the neighborhood cultivates a unique sense of whimsy that’s redefined daily. It gets its energy from Delmar Boulevard, an eclectic main drag lined with an array of ethnic and American restaurants, music clubs, coffee shops, vintage clothing stores and boutiques. The merchants cater to consumers who appreciate everything from fine to funky, and it’s an easy place to spend a full day exploring shops that offer everything from tattoos and piercings to books and records. Be sure to snap a photo with the Chuck Berry statue during your visit.



Loop street view.

1:00 PM

Visit the Missouri History Museum.

The Jefferson Memorial Building, built in 1913 with profits from the St Louis World’s Fair, is the current home of the museum. It includes national artifacts, as well as Missouri and St. Louis related materials. A replica of the Spirit of St. Louis as well as artifacts from the Louis and Clark expedition are also in the museum.



Missouri Historical Museum

4:00 PM

Visit the **Saint Louis Art Museum**

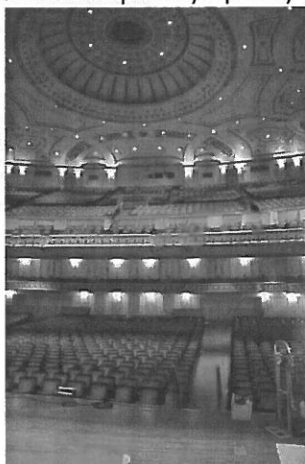
The **St Louis Art Museum** is one of the principal U.S. Art Museum, visited by up to a half million people every year. The museum's three-story building was built as the Palace of the Fine Arts for the 1904 World’s Fair, also known as the Louisiana Purchase Exposition. Architect Cass Gilbert was inspired by the Baths of Caracalla in Rome. In addition to the featured exhibitions, the Museum offers rotating exhibitions and installations.



St. Louis Art Museum

5:30 PM **Dinner at the Old Spaghetti Factory**

7:00 PM **Enjoy a performance of the St Louis Symphony in Powell Hall.**
The symphony is schedule to perform the Alpine Symphony by Richard Strauss.



Powell Hall

9:30 PM Return to your hotel.

Sunday, March 12 (3)

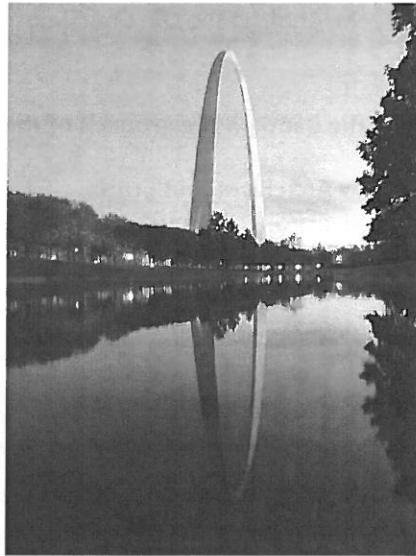
MEALS INCLUDED: B, L

7:00 AM Breakfast in your hotel
Check out of the hotel and load the motor coach.

9:00 AM **Jefferson National Expansion Memorial.**

Welcome to the **Gateway Arch**, also known as the **Gateway to the West**, the tallest national monument in the United States at 630 feet; it is St. Louis's best known landmark and a popular tourist attraction. Each year, approximately a million visitors ride the trams to the top of the Arch. The trams have been in operation for over 30 years, traveling a total of 250,000 miles and carrying over 25 million passengers. Built as a monument to the westward expansion of the United States, the Arch has become the iconic image of St. Louis.





The Gateway Arch

You will relive the Old West when you visit to the Museum. View rare Indian Peace Medals and weapons of survival to an actual tipi. The Museum preserves the past so that you can experience it today. This is an opportunity to discover the land that Lewis and Clark explored. See how the mountain men lived in the 1800s and take a peek inside a covered wagon.

The Arch, Old Court House and Museum are part of the Jefferson National Expansion Memorial, located near the starting point of the **Lewis and Clark Expedition**. The memorial park was established to commemorate several historical events:

- * the **Louisiana Purchase**, and the subsequent westward movement of American explorers and pioneers;
- * the first civil government west of the **Mississippi River**;
- * the debate over **slavery** raised by the **Dred Scott case**.



A view of the Old Courthouse from the Arch.

