

## New Hampton Football/Soccer Field Program

- Glyphosate application to kill off existing turf
- Lazer grade, removing exist turf
- Lazer grade, bringing turf to grade with 1 degree crown
- Install irrigation system
- Harley rake while maintaining grade of field
- Applying sulfur at 220 lbs per acre and manganese at 110 lbs per acre
- Use Rahn broom to incorporate minerals into soil
- Install HD Sport 2.0 seed at 7 lbs per square foot
- Apply Milorgranite 6-4-0 at 440 lbs per acre immediately after seeding
- Apply 24-5-10 at 2-3 weeks after seeding
- Apply 5-0-0 liquid Proactin at 6 weeks after seeding
- Apply 24-5-10 at 8 weeks after seeding

F4PCSS

## Rain Bird - Falcon 6504 - Part Circle Stainless Steel Rotor, Less Nozzle

- The Falcon 6504 is ideal for large turf sites such as parks, athletic fields, cemeteries, schools and commercial sites with spacing up to 65'
- Multi-function wiper seal and tapered riser keep the stem clear of debris, providing long-term protection
- Stainless steel riser option helps deter vandalism on public turf areas
- Nozzles are interchangeable from the front with no special tools
- Heavy-duty stainless steel retract spring ensures positive pop-down
- Sold individually. Manufacturer Pack Size = 12. Case Size = 20. Pallet Size = 800

Retail Price

**\$88.00** / each

In Stock  Not available in Sussex, WI [Check availability](#)

Quantity (minimum 1):

Add to Cart



Did you find what you were looking for on Reinders.com?





---

### About

With the Falcon 6504 rotor you can have it all – superior distribution, reliability and durability! Rain Curtain™ nozzles maximize performance and coverage. A multi-function wiper seal and tapered riser keep the stem clear of debris, providing long-term protection. Plus, heavy-duty construction makes the Falcon 6504 one of the toughest rotors in the field. Available in full- and part-circle models with optional stainless steel riser, the Falcon 6504 rotor is ideal for large turf sites such as parks, athletic fields, cemeteries, schools and commercial applications.

### **Additional Features:**

- Nozzles are interchangeable from the front with no special tools.
- Self-adjusting stator does not require replacement when changing nozzles.
- Radius adjustment screw allows radius reduction up to 25% without changing nozzles.
- Small 2" exposed diameter reduces possibility of injury in play areas.
- Patented, pressure-activated wiper seal and tapered riser stem on both plastic and stainless steel models protect internals from debris to ensure positive pop-up and retraction.
- 4" pop-up height to center line of nozzle clears taller turfgrass.
- Stainless steel trip gears ensure long-term durability.
- Part-circle, stainless steel rotor pop-up sprinkler
- Nozzle not included
- Stainless steel riser option helps deter vandalism on public turf areas
- Easy arc adjustment (part-circle model) through top of rotor from 40° - 360° no special tools required
- Water-lubricated gear drive for reliable, durable rotation
- Heavy-duty, stainless steel retract spring ensures positive pop-down
- Standard black rubber cover or optional purple rubber cover for non-potable water
- Removable Seal-A-Matic(SAM) check device prevents puddling and erosion caused by low-head drainage

---

### Specifications

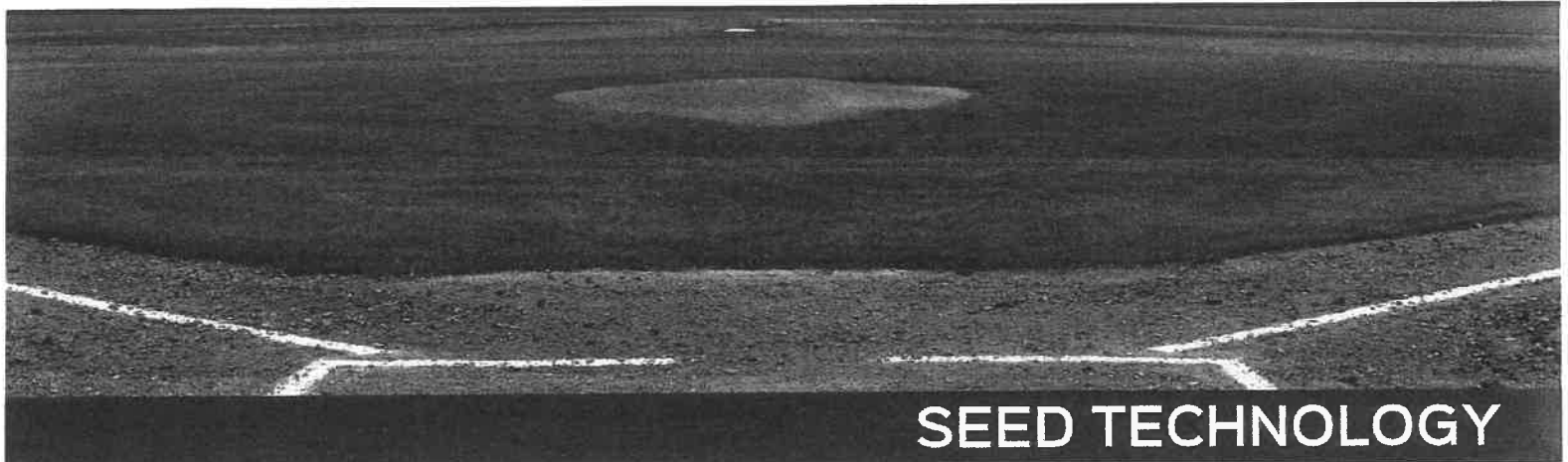
---

### Guides

---

**MORE PRODUCTS LIKE THIS**

---



## SEED TECHNOLOGY



### DESCRIPTION

VITALITY HD SPORTS 2.0™ is high density turf with a superb fibrous root system that is credited to Hampton (The Root Monster) and a diverse formulation of SUPER ELITE high performance Kentucky bluegrasses. VITALITY HD SPORTS 2.0 produces extreme wear and traffic tolerant turf that is fast to recover from hard play and its superior genetics build a remarkable advantage over summer patch and other diseases. With early spring green up and extended fall color, plus full sun and stadium shade performance, VITALITY HD SPORTS 2.0 outperforms other blends on created sports fields due to the synergy created with superior varieties in this heavy duty Kentucky bluegrass blend.



### FORMULA

- 12.5% Fullback or Bewitched Kentucky Bluegrass
- 12.5% Hampton Kentucky Bluegrass
- 12.5% Blue Bank Kentucky Bluegrass
- 12.5% Noble Kentucky Bluegrass
- 50% XALT Seed Enhancement



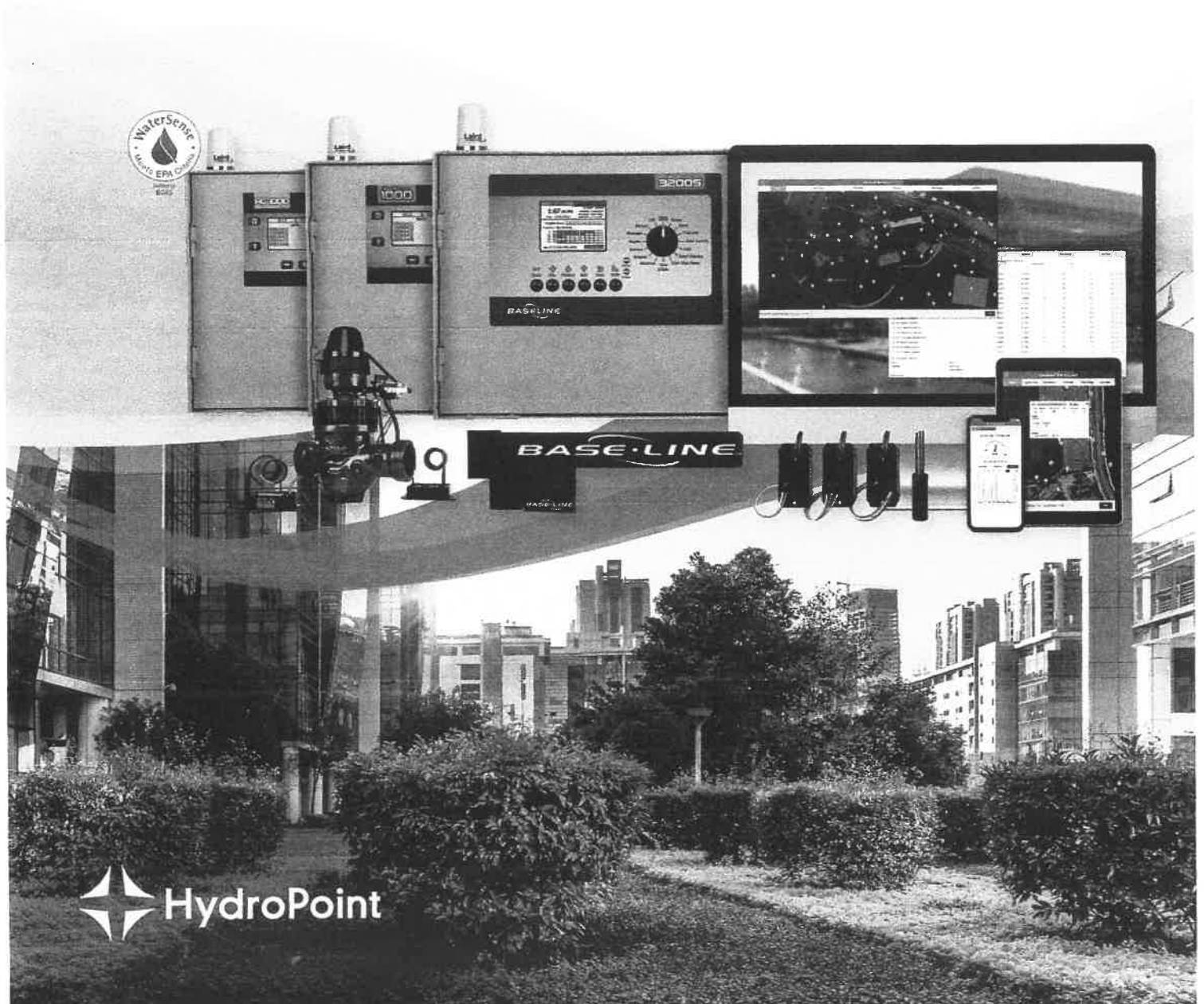
### SEEDING RATE

- 3 - 4.5 lbs. per 1,000 sq. ft.
- 125 - 200 lbs. per acre

Shop online at  
**[www.reinders.com](http://www.reinders.com)**  
**800-785-3301**

# BASELINE™

## Engineered Irrigation Solutions



 HydroPoint

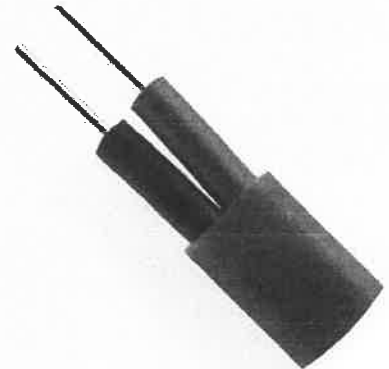
# What Makes Baseline Different

Baseline is a sensor-based control system able to dynamically respond to real-time data using algorithms to make better irrigation decisions. With a suite of cloud-managed controller platforms utilizing modern communication and networking options, Baseline has an engineered solution for all sites.

- Networked devices that give power to the users.
- Has earned the EPA WaterSense label for both weather-based and soil moisture-based control.

## 2-Wire & Conventional Wire Devices

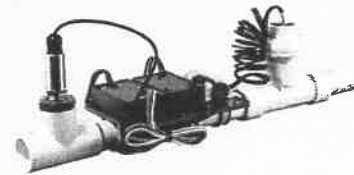
- All Baseline controllers are available in both 2-wire and conventional wire.
- All Baseline controllers can be implemented with wired or wireless 2-wire.



## Flow Monitoring & Management

Measured real-time flow data is used for leak detection on mainlines and lateral lines. In addition, the watering algorithm optimizes the hydraulic performance of the system allowing up to 99 concurrent zone operations.

## Control Point™ Technology



- Engineered to automate, control, monitor, and stabilize flow at any point on the mainline hydraulic structure.
- Compatible with BaseStation 3200S platform only.

# Controller Platforms

Powerful, cloud-based interfaces, built with smart watering algorithms



**BaseStation™ 3200S**

- Engineered as a scalable water management platform that prioritizes how water is applied to a single or multiple sites.
- Supports all responsive two-wire devices right out of the box.
- Networked web based controller for remote management.
  - Operates 200 zones, 8 Control Points, 25 soil moisture sensors, 99 programs.



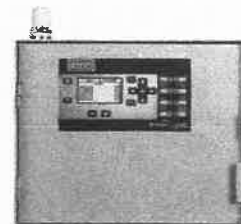
**SubStation™**

- A networked extension of the BaseStation 3200S programming.
- Wireless connectivity for zone operation, flow management and all two-wire devices.
- 6 zone to 100 zone configuration options.



**FlowStation™**

- Next level hydraulic management for a network of up to 20 BaseStation 3200S controllers.
- Manages 20 water sources, 20 Control Points, 40 mainlines and 4,000 zones. Intelligently allocates water resources to the programs running on the controllers in the shared flow group.



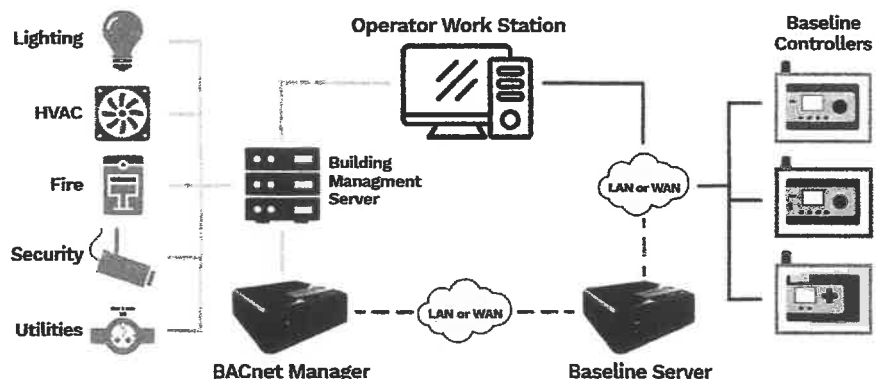
**BaseStation™ 1000**

- Engineered as a water conservation controller that controls the amount of water applied to a single site.
- Operates 100 zones, manages 3 points of connection, and supports 30 programs and 20 soil moisture sensors.

# Building Management Integrations

## BACnet Manager™

BACnet Manager is Baseline's building management integration software. Used to integrate with any building management system to display landscape irrigation information like water-use data, system status and alerts and more.



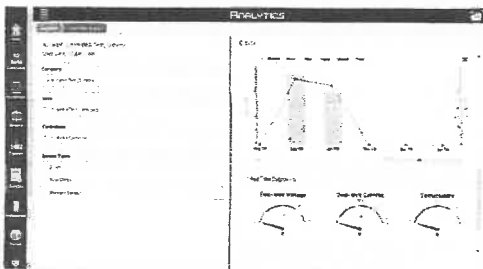
# Cloud-Based Irrigation Management Software

## BaseManager™

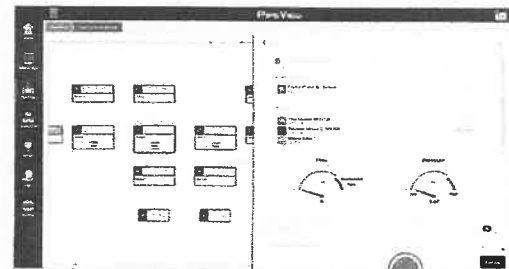
Cloud-based software that allows BaseStation 3200S controllers AND BaseStation 1000 controllers to be managed remotely, using any web browser. All of the programming capabilities from the convenience of any internet-connected device, with the addition of an interactive map and detailed reporting.



### Analytics



### Mobile Access



## PipeView™

- Real-time digital hydraulic model that represents water flowing through all devices.
- Quick and easy flow reports to manage your site efficiently.

## Networking and Communication Options

Baseline systems let you choose the communication option that works for your site.



**Ethernet** - comes standard with every BaseStation 3200S, and BaseStation 1000

**Ethernet Radio** - available as an add-on module to create a local area network (LAN) when connecting multiple BaseStation 3200S controllers and/or SubStations on a single site



**Wi-Fi** - available as an add-on module



**Cellular** - available as an add-on module



# Sensors and Devices

Versatile sensors for real-time data gathering and automation.



## Soil Moisture Sensor™

- Provides automatic measurements of soil moisture and soil temperature.
- Measures evapotranspiration in real-time.
- Continuously self-adjusts with the seasons.



## Flow Sensor

- Used to measure the flow of water in real-time, to allow the controller to automatically respond to high/low flow conditions, isolate zone faults, and protect against leaks.



## Pressure & Level Sensor

- Used to start, stop, or pause a master valve, pump, or program based on operating hydraulic pressure.
- Used as a level sensor (submersible or inline) to manage the evacuation or refill of cisterns, lakes, and other water storage systems.



## Precip Sensor™

- Used to start, stop, or pause irrigation based on precipitation data.
- Real-time and historical data available using BaseManager software.



## Soil & Air Temperature Sensor

- Used to the start, stop, or pause irrigation based on air temperature.



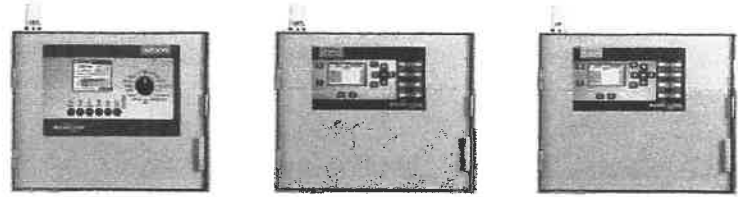
## Solar & DC Power

- Available for BaseStation 3200S and BaseStation 1000 controllers.
- Supports full configuration including all 2-wire devices.
- Available only for 2-wire controllers.



# Controller Options

A sensor-based control system is able to dynamically respond to real-time data using algorithms to make better irrigation decisions.



	BaseStation 3200S	BaseStation 1000	AG 1000
# of zones	200	100	100
Conventional wire	✓	✓	✓
Two-wire	✓	✓	✓
Advanced programming priorities	✓	-	-
# of programs	99	30	40
Built-in ethernet port	✓	✓	✓
Supports Wi-Fi, cell modem, and spread spectrum radio	✓	✓	✓
# of soil moisture sensors	25	20	20
# of water sources	8	3	3
Optimized for mobile	✓	✓	✓
EPA WaterSense Labeled Weather-based Irrigation Controller	✓	✓	✓
EPA WaterSense Labeled Soil Moisture-based Irrigation Controller	✓	✓	✓
Includes flow monitoring and management features	✓	-	✓
Compatible with central control	✓	✓	✓
Automatically repeating programs	-	-	✓
Controller-level tiered passcodes	✓	✓	✓
Supports weather-based watering	✓	✓	✓
Zone operation in seconds	-	✓	✓
Supports Control Point™ technology	✓	-	-
Compatible with the FlowStation™	✓	-	-
Compatible with the SubStation™	✓	-	-
Supports Precip Sensor™	✓	-	-

## Start your next project with Baseline

Baseline works with clients to discover desired objectives, develop the design intent and deliver successful outcomes.

**“These sensors measure evapotranspiration in real-time. Based on that, we get good indicators of how and when to schedule irrigation.”**

President of Northern Designs  
Irrigation Consultants & Designers

info@baselinesystems.com    [hydropoint.com/baseline](http://hydropoint.com/baseline)



## Football Field Renovation

- Tear out sod and regrade \$8,000
- Irrigation \$16,000
- Grass seed, fertilizer and other soil amendments \$4,000

Complete costs of renovation \$28,000